



AQUATORIA YACHTING

SALONA 38

INSTRUCTION



Precautions and recommendations

1

Do not leave the marina in strong winds above 27 knots!

2

Do not use the engine speed above 2500 turns.

3

It is allowed to use the engine speed above 2500 turns only for maneuvering.

4

During anchoring do not give up the anchor chain completely.

Keep some anchor chain for future use. The length of the given chain must be equal to 4 depths.

5

Watch on the water during parking reverse to avoid winding of the mooring lines on the propeller

6

Also during reverse parking beware of hidden hazards that may damage the rudder.

7

Removing the anchor go ahead at a low speed 0.3 knots in the line of the chain. This will unload anchor winch and the anchor winch fuse will not be broken.

8

If the anchor caught the ground, don't pull it up, otherwise the chain may be broken and the anchor will stay on the ground.

9

To lift the hooked anchor up you need to loose some more chain, after that turn the yacht at another angle and try to pull up the anchor once again.

10

When starting the engine at idle, increase its speed up to 3500 turns for a couple of seconds and check if the water is coming of the exhaust pipe.

11

Don't anchor in the wrong place. When sleeping at anchor, check the weather forecast. Make sure that your bay is safe.

12

It's better to give the way to all vessels for you can be out of sight of another boat . Avoid collisions !

13

When anchoring, make sure that your chain does not cross another one.



WC
(toilet+sink+ shower)

Well , it's the first time you are onboard **Salona 38** . Seven unforgettable days and nights (may be more) are ahead. Yacht is your home now and it means that you should learn its either technical and household features to avoid unpleasant situations and breaks .



First you should pay attention to the toilet. Those who have no prior sailing experience may face some difficulties with bathroom and in particular toilet bowl .



1 There is a special pump and switch by the side of the toilet bowl. Put it into left position and pump overboard water



2. Then put it into right position and pump all contents into a special tank.

If you don't pump the water , the smells will soon make themselves felt. If you pump more or do not delete it , the content will spill when you roll.

3. After completing the procedure return the pump handle in a low position and lock it. Otherwise , when there is a strong pitching (according the rule of communicating vessels), seawater may come in. Don't forget to pump a lot of water.



It is forbidden to throw toilet paper and hygienic kit into the toilet bowl to prevent pipe clogging. Otherwise it will be necessary to disassemble the entire construction .

If you don't pump the water , the smells will soon make themselves felt. If you pump more or do not delete it , the content will spill when you roll. If the valve is open all waste will go to the sea.



Shower is the same tap with hose and you can take it out. There are cold and hot water.

If the hose does not come out, don't pull it!

It may catch something inside. To release the hose, open the box under the sink and correct it

After a shower the water remains in the room. To drain the water you need to turn on the pump. Shower flush button is next to the sink.

Press it, if the shower drain does not work, lift the grate and make sure there is no dirt.



Tank valve



We recommend to open the tank during sailing. The valve is under the sink. It is the biggest valve among all valves by sight.

Galley

Galley and dining area are the most spacious space of a lower deck. There's enough place for three hostesses during of cooking and whole crew can sit for dinner easily.

The galley is equipped with everything you need for housekeeping.

•Standard two-hob gas stove with oven



The stove hangs on hooks, that allows it to swing in time with the waves, keeping horizontal position and soup in the pot.

It can be fixed in ordinary position if needed.

Fridge

Washer

There are two built-in washers. Just like stove, they can be closed with pieces of table top. The tap is standard. To prevent pipe clogging do not flush waste (e.g. coffee grounds)



How to wash dishes with minimal water consumption?

Very easily !

Nearby the sink on the floor there is overboard water pump pedal. Use it easy to pump the water and wash the dishes with it; after that just flush foam and slush with fresh water!

Don't forget to save water!

Overboard water tap

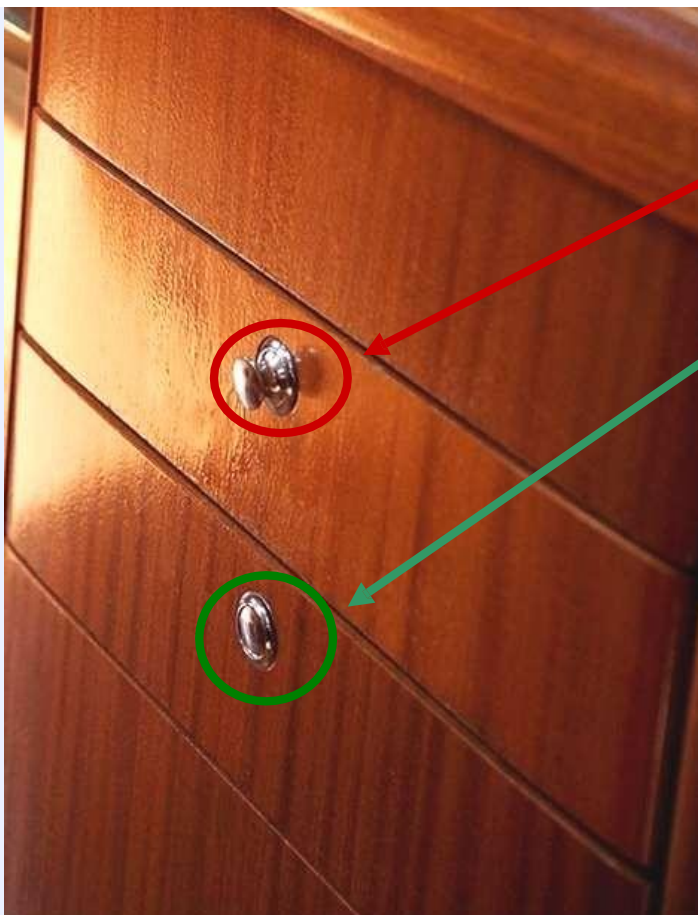
Overboard water pumping pedal



When the yacht goes under sails all things must be fixed. Put the food, dishes, cutlery into the boxes. Each box has a locking handle-button.



Press the handle to close the box. Now it is locked and the handle does not sticking out, because it is important during the swell any outstanding object may injure you .



Opening box

Closing box

Starboard aft cabin



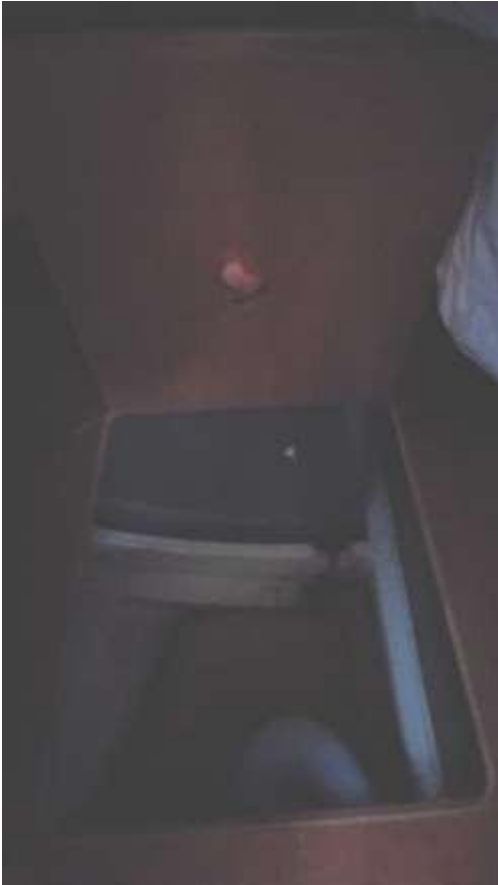
Port aft cabin



Forward cabin



What is under the mattresses in the cabins



Starboard aft
cabin
Fuel tank



Forward cabin
Water tank



Port aft cabin
Water tank

Skipper bridge

There is the black panel with ship's power systems, communications and navigation control switches on it.



Webasto (interior heater system)



Audio

Multifunction
GPS

VHF



Main switches 12V & 220V



- 1) Service
- 2) Emergency
- 3) Engine

If there is no Wi-Fi , for beginning check the network is on ,if no , switch off the tumbler 9 (WIFI) for a couple minuts and switch it on again .

*The batteries on the yacht are designed for 1 day of battery life, to charge the battery You need to connect to the shore power supply or start the engine for 1-2 hours.

If no electricity on board



Also , these main switches must always be turned on . These main switches are needed for power on board .They is located in the starboard aft cabin

If no electricity on board , you should:

- 1) Check if the ashore switch is on
- 2) If ashore switch is on , check the power switch (1) on the yacht . It is located behind the panel of the skipper's table. It should be on .
- 3) Turn it on and electricity will be on board.



- | | |
|---------------------------|---------------------------------|
| 1. Cabin lights | 14. Stern bilge pump |
| 2. Cabin lights | 15. Fridge |
| 3. Stern light | 16. Anchor winch |
| 4. Navigation lights | 17. 120V DC |
| 5. Running lights | 18. Instrument , autopilot |
| 6. Anchor light | 19. Bow bilge pump (Manual) |
| 7. Deck light | 20. Battery charge level sensor |
| 8. Navigation instruments | 21. Fuel level sensor |
| 9. VHF | 21. Water level sensor |
| 10. Music, TV | |
| 11. Water pump | |
| 12. Shower pump | |
| 13. Bow bilge pump | |



Stainless fuel tank and the faucet , are close the white round water heater.



AQUATORIA
YACHTING



Under the port seats there are pumps and yellow lever for changing water tanks .

Water tank



Batteries are under the starboard seat

Engine management



Anchor winch

Control buttons

Anchor chain length – 40 m

Water filling inlet



Fuel filling inlet





1. Gas handle (for moving it you need to press the button under handle).
2. Tachometer
3. Start with buttons as shown in instruction on the yacht.



To check the engine and exhaust system on idle, move the gas handle in neutral position (midway). Then press button 1 and start to turn up the engine. Thus you can check the engine operation without propeller rotation.

Gas handle

A rather tricky mechanism.

To go ahead, smoothly move gas handle towards the bow of the yacht (towards the bow). To go back, smoothly move gas handle back (towards the stern) . All movements should be smooth.

**Watch the engine speed!
Do not go above 2.5 mark!**

To fold up the propeller during sailing, move gas handle into REVERSE position (backward) when power is off. The propeller will fold up.

Don't forget to move gas handle into neutral position before starting the engine.



Dip stick
(a probe for checking
engine oil level)
**Don't forget to check oil
level before sailing!**

Engine
alternator
belt
**Don't forget
to check its
condition
before
sailing!**

Engine coolant
**Don't forget to
check coolant
level before
sailing!**



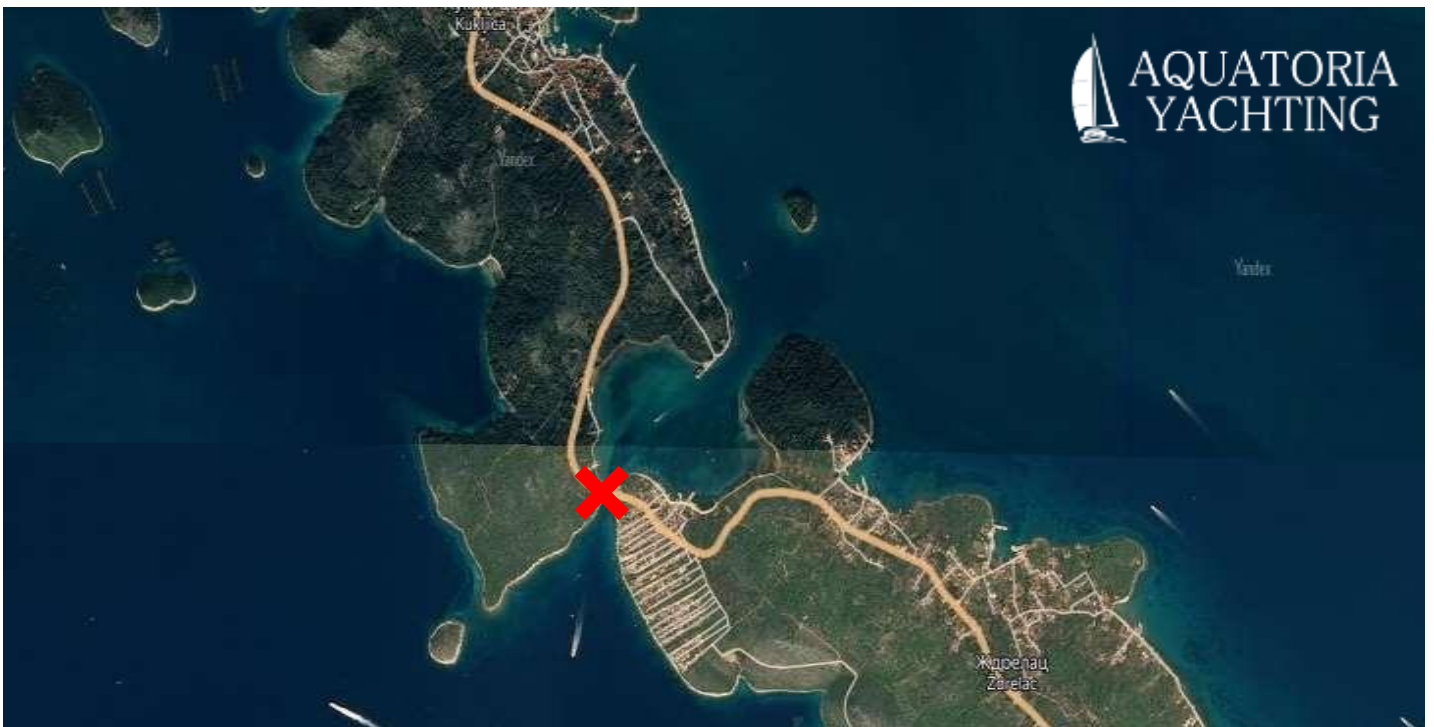
The ladder for swimming

Exit from the marina in Pirovac

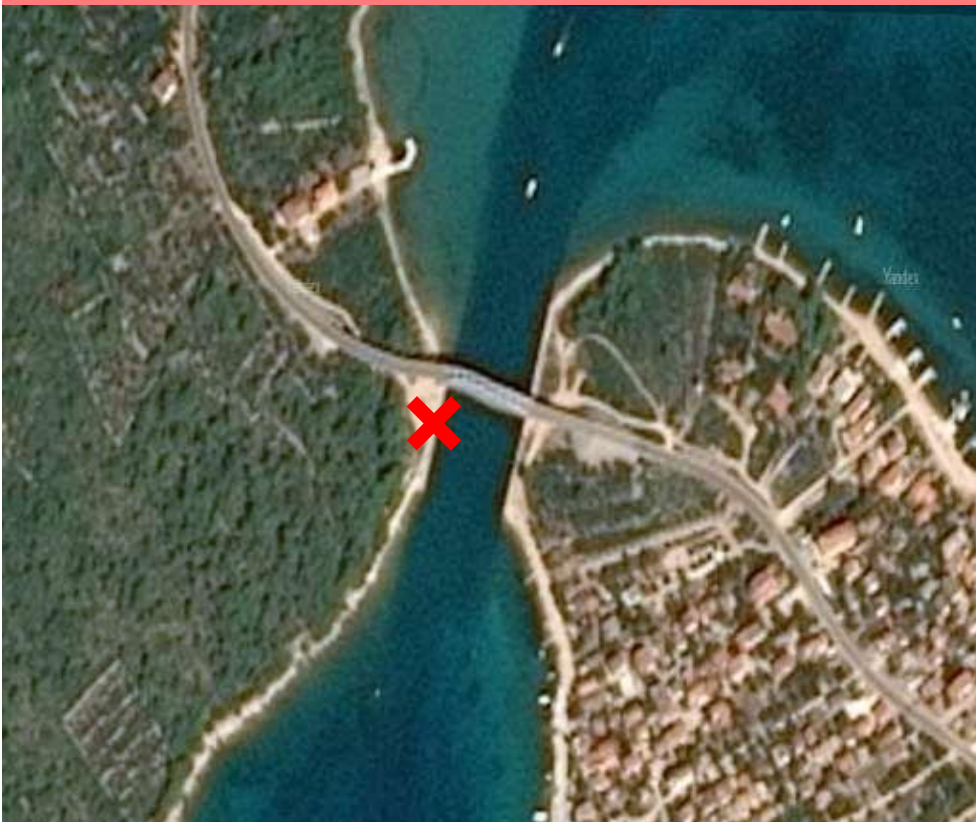


Use only marked passages otherwise the depth will not let you go between other islands.

DO NOT go under Ugljan-Pasman bridge!



Ždrelac Bridge, connecting Ugljan and Pasman islands is rather low – only 16,5 m high. There is no passage for yachts under the bridge!



CROATIAN OFFICE PHONE NUMBER

+385 23 77 70 08

Base manager phone number

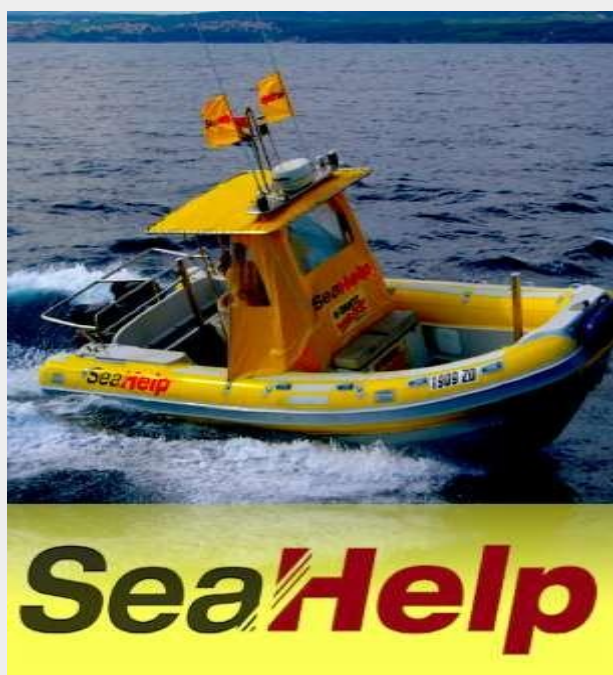
+385 95 5331 793

SEA HELP – VIKTORIA ORLIC

(tel. +385 919 112 112 or 0800
112 00 112) (VHF 16)

Coast guard

Response at VHF channel 16



Rapid response emergency phone:

112 — Emergency operations service

Major emergency phones:

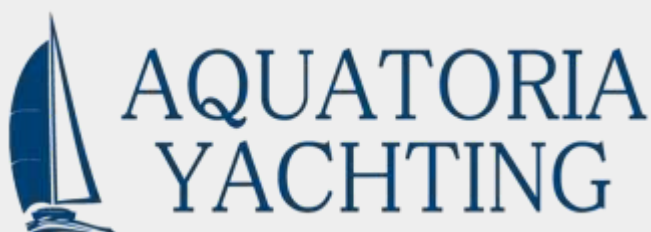
192 — Police

193 — Fire emergency

194 — Ambulance

195 — Rescue service

**In case of emergency
contact the charter
company!**



1) If you crash into another boat while exiting or entering the marina you should:

- Call the captain's office (channel 16)
- Receive contact information of those you've crashed
- Do not leave the place in any case! Stay where you are.
- Try to solve the problem on the spot (be sure to get a note).

3) If any yacht crashed your boat outside the marina, you should:

- Call the police (192 or 195) or the captain's office (channel 16).
- Estimate the damage
- Write down the witness contacts
- Write down the number, yacht's name and charter company .

2) If any yacht crashed your boat while exiting or entering the marina you should:

- Call the captain's office (channel 16)
- Receive contact information those who hit you
- Do not leave the place in any case! Stay where you are
- Visit to marina office
- Try to solve the problem on the spot (be sure to get a note)
- Write down the number, yacht's name and charter company too .

4) If you crashed into someone else's boat outside the marina you should:

- Stop
- Call captain's office (channel 16)
- Estimate damage
- Try to solve the problem on the spot (be sure to get a note).

5) If your boat run aground (sand) you should:

-If you are unable to sail away, call the charter company and ask for help.

6) If you hit a rock (stone) you should:

-Call the captain's office (channel 16)
-Call charter company.
.

7) If you have serious damages (mast fell, fire) you should:

-Inform the charter company
-Ask for help in transportation (call "SEAHELP"). +385 919 112 112 or 0800 112 00 112

8) In the case of average breakdowns (engine failure, sail break, anchor loss etc.) you should:

-Call the charter company

9) In the case of emergency accidents (human death or serious injures) you should:

-Call rescue service (channel 16, repeat «MAYDAY» -3 times)
-Call the police.

10) In the case of marine pollution (by you), if the boat is sinking and the fuel is going out , you should:

-Call the captain's office
-Try to turn off fuel tap.

11) If you are coming late for CHECK OUT you should:

-Call the charter company and inform about it!

SEAHELP – VIKTORIA ORLIC
(tel. +385 919 112 112 or 0800 112 00 112) (VHF 16)

Lučka kapetanija	lučki kapetan	voditelj Odjela za inspekcijske poslove	Pomorski promet 00 - 24	telefon/fax
<u>Pula</u> 52100 Pula, Riva 18	Dolores Brenko Škerjanc	tel. 052 535 881	tel/fax 052 222 037 tel. 052 535 870 Pula.pomorskipromet@pomorstvo.hr	052 535 877 052 535 888
<u>Rijeka</u> 51000 Rijeka, Senjsko pristanište 3	Darko Glažar	voditelj Odjela: Vladimir Malnar tel. 051 212 474 fax. 051 212 696	voditelj Odjela: Edo Kovačević tel. 051 214 031 fax. 051 313 265 Rijeka.pomorskipromet@pomorstvo.hr	051 211 422 051 211 537
<u>Senj</u> 53270 Senj, Obala kralja Zvonimira 12	Nenad Bugarin	inspektor: Neven Tomljenović tel. 053 881 301	voditelj Odjela: Danijel Vrzić tel. 053 881 301 senj.pomorskipromet@pomorstvo.hr	053 881 301 053 884 128
<u>Zadar</u> 23000 Zadar, Liburnska obala 8	Alen Rukavina	inspektor: Boris Medić tel. 023 254 886	voditelj Odjela: Denis Livljanić tel. 023 254 880 fax. 023 254 876 Zadar.pomorskipromet@pomorstvo.hr	023 254 888 023 250 235
<u>Šibenik</u> 22000 Šibenik, Obala Franje Tuđmana 8	Robert Baljkas	inspektor: Peroslav Kronja tel. 022 217 217	voditelj Odjela: - tel. 022 217 214 fax. 022 212 626 sibenik.pomorskipromet@pomorstvo.hr	022 217 217 022 217 378
<u>Split</u> 21000 Split, Obala Lazareta 1, p.p. 317	Željko Kuštera	voditelj Odjela: Ivan Paušić, v.d. tel. 021 302 409	voditelj Odjela: Ivica Vuletić tel. 021 362 436 fax. 021 346 555 Split.pomorskipromet@pomorstvo.hr	021 302 400 021 361 298
<u>Ploče</u> 20340 Ploče, Trg kralja Tomislava 24	Joško Nikolić	inspektor: Toni Grgić tel. 020 670 506	voditelj Odjela: Dubravko Paskojević v.d. tel. 020 679 008 020 670 206 Ploce.pomorskipromet@pomorstvo.hr	020 679 008 020 678 621
<u>Dubrovnik</u> 20000 Dubrovnik, Vukovarska 16	Mato Kekez	voditelj Odjela: Igor Jadrušić tel. 020 418 984	voditelj Odjela: Zvonimir Cetinić tel/fax. 020 418 989 020 419 211 Dubrovnik.pomorskipromet@pomorstvo.hr	020 418 988 tel/fax. 020 418 987 020 418 9

Information page

CROATIAN OFFICE CONTACTS

OFFICE PHONE NUMBER IN CROATIA

+385 23 77 70 08

OFFICE ADDRESS

Obala Rtine 1A, 22213 Pirovac,
Croatia

MARINA PIROVAC

BEARINGS

43°48'58,32" N

15°39'47,65" E

Office location

Aquatoria Yachting office located
on the 2st floor in the building,
situated in front of A and B
pierces

Office schedule:

Fri, Sat: 08-20

Sun: 08-12

Mon - Thu: 08-16

EMAIL

info@aquatoria-yachting.com

office@aquatoria-yachting.com

TELEGRAMM

[aquatoriapirovac](https://t.me/aquatoriapirovac)

Skype

Office Aquatoria Yachting

Base manager number

+385 95 5331 793

Marina Pirovac **VHF 17 Channel**

